

Job Name: _____

Location: _____

Purchaser: _____

Engineer: _____

Submitted To: _____

For: Reference Approval Construction

Submitted By: _____

Date: _____

Unit Designation: _____

Cooling Performance:

Nominal Capacity	42,700 Btu/h
Nominal Sensible Capacity	34,700 Btu/h
EWT Range	40-50°F (5-10°C)
Nominal Flow Rate	8.0 GPM
Nominal Pressure drop	5.4 Ft/Hd

Heating Performance:

Nominal Capacity	50,200 Btu/h
EWT Range	100-125°F (38-52°C)
Nominal Flow Rate	8.0 GPM
Nominal Pressure drop	5.4 Ft/Hd



Notes:

- Cooling Capacity is based on 50°F Entering Water Temp and 80°F DB/67°F WB Entering Air Conditions.
- Heating Capacity is based on 110°F Entering Water Temp and 70°F DB Entering Air Conditions.
- Refer to detailed capacity tables for further information pertaining to the entire entering water temperature range and for flow rates and pressure drop.

Airflow Rate:

Nominal CFM	1600 CFM
Total External Static Pressure	Std: 0.3" WG / Max: 0.5" WG
Blower Speed setting	"A" FACTORY SETTING
Motor rating	3/4 HP

Airflow arrangement

Up-flow, Horz. Left, Horz. Right (Possible)

Electrical Data:

Power supply	208-230V / 1PH / 60Hz
Min. Circuit Amps (MCA)	6 AMP
Max. overcurrent protection (MOP)	15 AMP
Electrical Heater Options	<input type="checkbox"/> 15kW <input type="checkbox"/> 20kW <input type="checkbox"/> 25kW

Electrical Heat Integral Disconnect:

- Electrical Data for Fan Motor only.
- Factory installed service switch over 10kW (No disconnect).
- See Guide specifications for electrical data for units with factory mounted electric heat.

Physical Data:

Dimension (H x W x D)	48"x21-1/4"x28"
Weight	230 lbs
insulation type / R-Rating	1/2"JM TUF-SKIN

Installation Clearances: U.L. Listed for installation with Zero inches Clearance to Combustible materials

Connection type

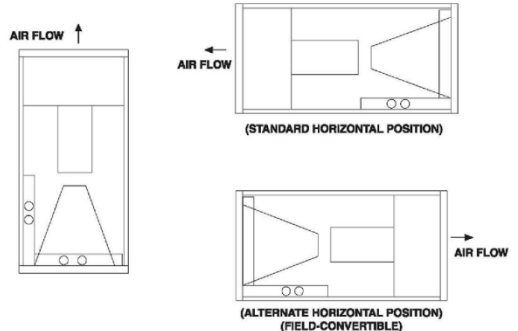
Inlet / Outlet Connections	1"(Nominal)
Connection Type	Sweat
Drain Connections	3/4"(M) NPT

Feature:

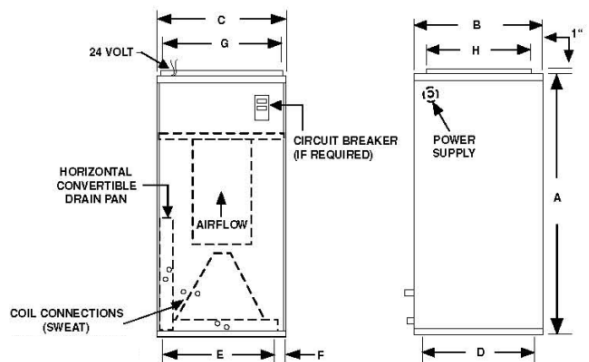
Air Filter (MERV 8 Throwaway) 20"x25"x1"

Airflow arrangement

3-WAY AIRFLOW



Physical Dimensions



A	B	C	D	E	F	G	H	FILTER SIZE
48	28	21-1/4	26-1/4	17-1/4	2	19-1/4	18	20x25x1